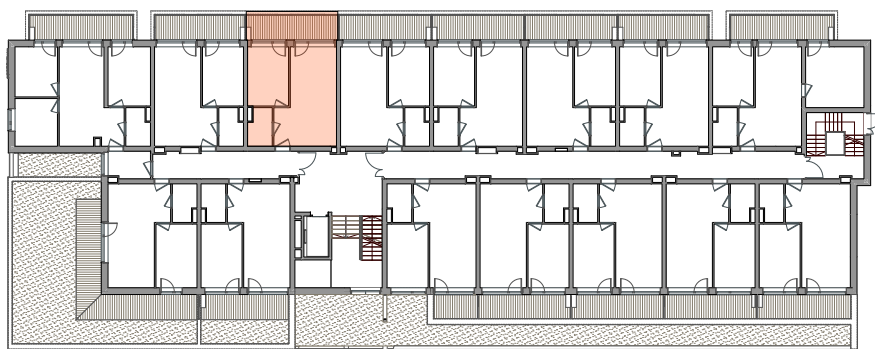


PIĘTRO I  
2P+AK  
37,27 m<sup>2</sup>



POWIERZCHNIA **37,27 m<sup>2</sup>**

BALKON	9,58 m <sup>2</sup>
1. SALON	14,54 m <sup>2</sup>
2. ANEKS KUCHENNY	8,32 m <sup>2</sup>
3. POKÓJ	10,60 m <sup>2</sup>
4. ŁAZIENKA	3,81 m <sup>2</sup>

