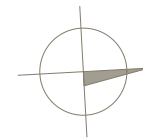
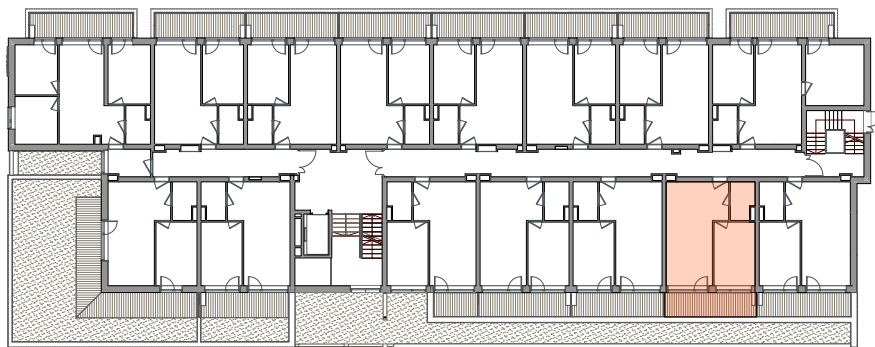


PIĘTRO I  
2P+AK  
39,00 m<sup>2</sup>



POWIERZCHNIA **39,00m<sup>2</sup>**

TARAS 9,22 m<sup>2</sup>

- |                   |                      |
|-------------------|----------------------|
| 1. SALON          | 15,45 m <sup>2</sup> |
| 2. ANEKS KUCHENNY | 8,32 m <sup>2</sup>  |
| 3. POKÓJ          | 11,41 m <sup>2</sup> |
| 4. ŁAZIENKA       | 3,81 m <sup>2</sup>  |

