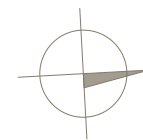
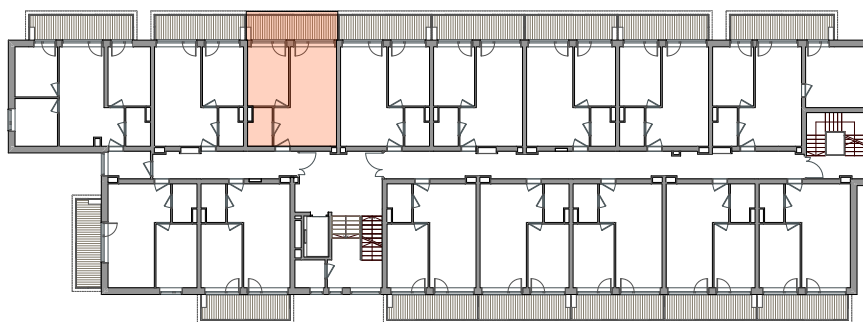


PIĘTRO II
2P+AK
37,27 m²



POWIERZCHNIA **37,27 m²**

BALKON	9,58 m ²
1. SALON	14,54 m ²
2. ANEKS KUCHENNY	8,32 m ²
3. POKÓJ	10,60 m ²
4. ŁAZIENKA	3,81 m ²

