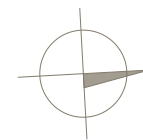
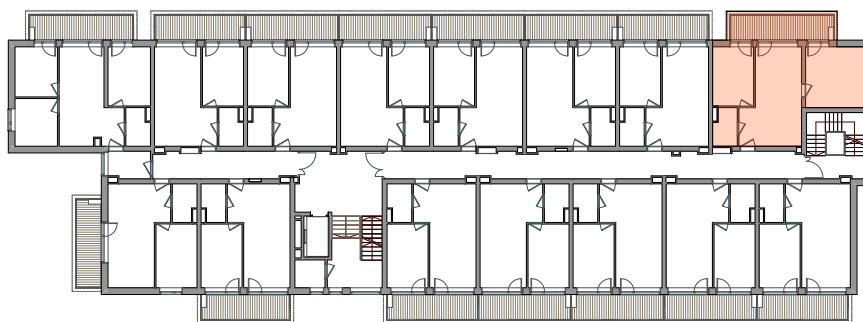


PIĘTRO II
3P+AK
52,76 m²



POWIERZCHNIA **52,76 m²**

BALKON 10,82 m²

1. SALON 14,53 m²

2. ANEKS KUCHENNY 8,32 m²

3. POKÓJ 10,60 m²

4. ŁAZIENKA 3,81 m²

5. POKÓJ 15,50 m²

