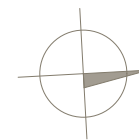
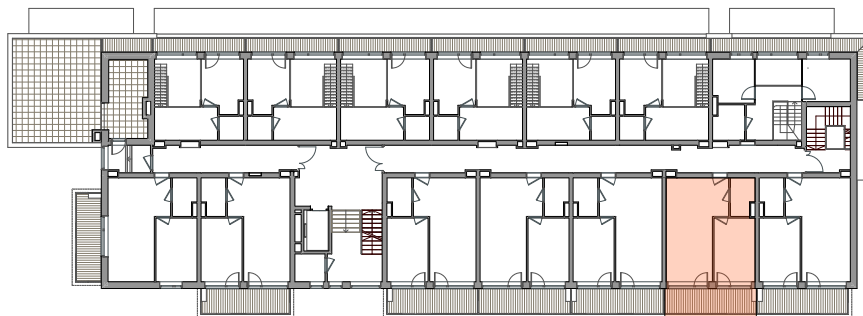


PIĘTRO V
2P+AK
39,00 m²



POWIERZCHNIA **39,00m²**

BALKON 9,58 m²

- 1. SALON 15,45 m²
- 2. ANEKS KUCHENNY 8,32 m²
- 3. POKÓJ 11,41 m²
- 4. ŁAZIENKA 3,81 m²

